



General Plan Advisory Group

Meeting 1 | Orientation and Visioning

June 16, 2022

Agenda



- 1. Advisory Group Introductions**
- 2. General Plan Overview**
- 3. Public Outreach Program Overview**
- 4. SWOT Analysis (Strengths, Weaknesses, Opportunities and Threats) Discussion**
- 5. Existing Conditions Resources**
- 6. Visioning Exercises**
- 7. GP Update Schedule**

Introduction to the General Plan

General Plan Overview



Government Code Section 65300 et. seq.:

“Every planning agency shall prepare and the legislative body of each county and city shall adopt a **comprehensive, long-term general plan for the physical development** of the county or city, and of any land outside its boundaries which in the planning agency’s judgment bears relation to its planning.”

General Plan Overview

General Plan Primacy: Consistency Requirements

GENERAL PLAN

Specific Plans

Zoning

Design Standards

Development
Agreements

Subdivision
Maps

Development
Permits

Conditional
Use
Permits

Capital
Improvements

General Plan Overview



- **Vision**

- Articulation of the core values and desires of the community expressed as an image of the future it wishes to create

- **Goals**

- An ideal future end related to the public health, safety, or general welfare.
- A general expression of community values and may be abstract in nature.
- Generally, not quantifiable or time dependent.

- **Policies**

- Specific statement that guides decision-making
- Commitment to a particular course of action

- **Implementation Programs**

- Action, procedure, program, or technique that carries out general plan policy

General Plan Overview

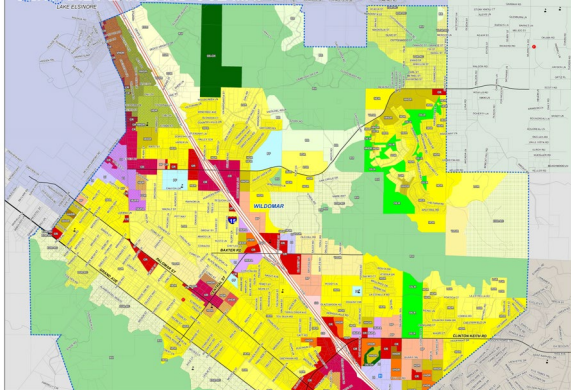


Who Uses the General Plan...

- **City Council and Planning Commission:** Basis for long-term and short-term decisions, municipal budgeting, capital improvements, and priorities.
- **City Staff:** Reference in reviewing development applications, planning and budgeting capital improvements, and service programming.
- **Residents, Business Owners, and Developers:** Guidance regarding what will be preserved, enhances, and changed.
- **Other Local and Regional Agencies:** Reference when projecting future needs and services.

General Plan Overview

LAND USE



CIRCULATION



ECONOMIC DEVELOPMENT



CONSERVATION



OPEN SPACE



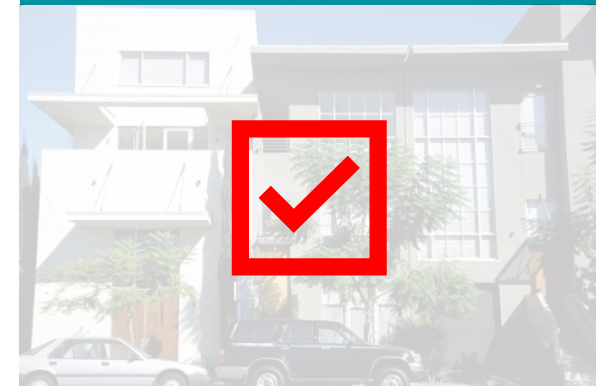
NOISE



SAFETY



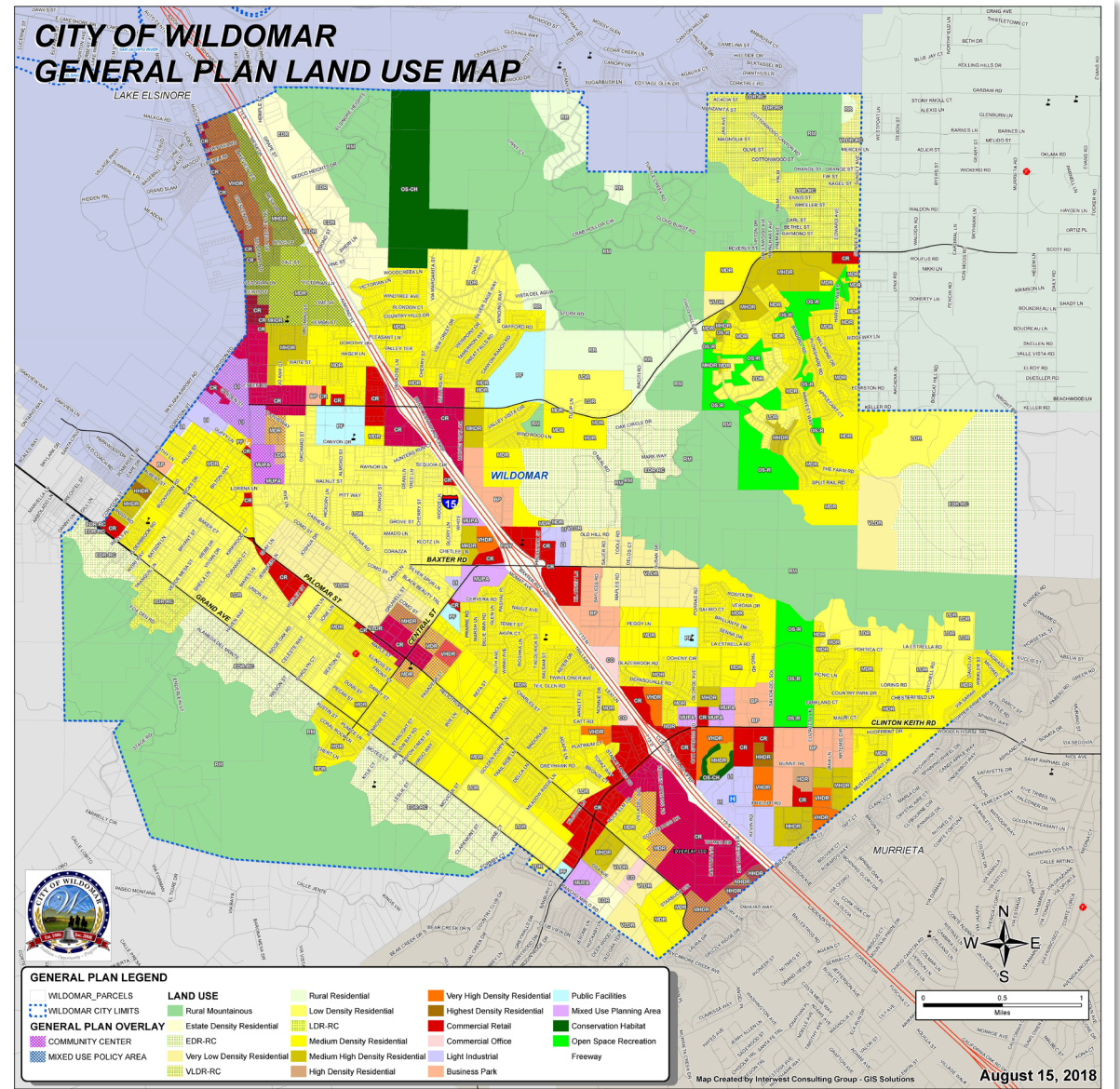
HOUSING



General Plan Overview

Land Use Map

Designates the proposed general distribution, location, and extent of the uses of the land for housing, business, industry, open space, location, public buildings, and other categories of public and private uses of lands.



General Plan Overview

Circulation (Mobility) Element

- Location of existing & proposed transportation routes, terminals, & other facilities, all correlated with the land use element
- Systems
 - ▶ Streets/highways
 - ▶ Transit
 - ▶ Bicycle
 - ▶ Aviation and railroad
 - ▶ Navigable waterways
 - ▶ Parking
 - ▶ Transportation system management

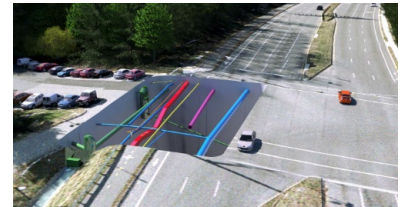


General Plan Overview

Circulation (Infrastructure) Element

Water, Sewer, Storm Drainage, Solid Waste, Energy, Communications

- Identify service providers
- Evaluate existing deficiencies and adequacy to support growth
- Define policies to correlate improvements & growth—including funding responsibilities
- Define strategies to **conserve scarce resources**



General Plan Overview

Conservation Element



Conservation, development, & utilization of natural resources (water, forests, soils, harbors, fisheries, wildlife, minerals)

General Plan Overview

Conservation Element

Conservation, development, & utilization of natural resources (water, forests, soils, harbors, fisheries, wildlife, minerals)



General Plan Overview

Open Space Element



- *Preservation of natural resources*
- *Managed production of resources*
- *Outdoor recreation*
- *Public health & safety*

General Plan Overview

Noise Element

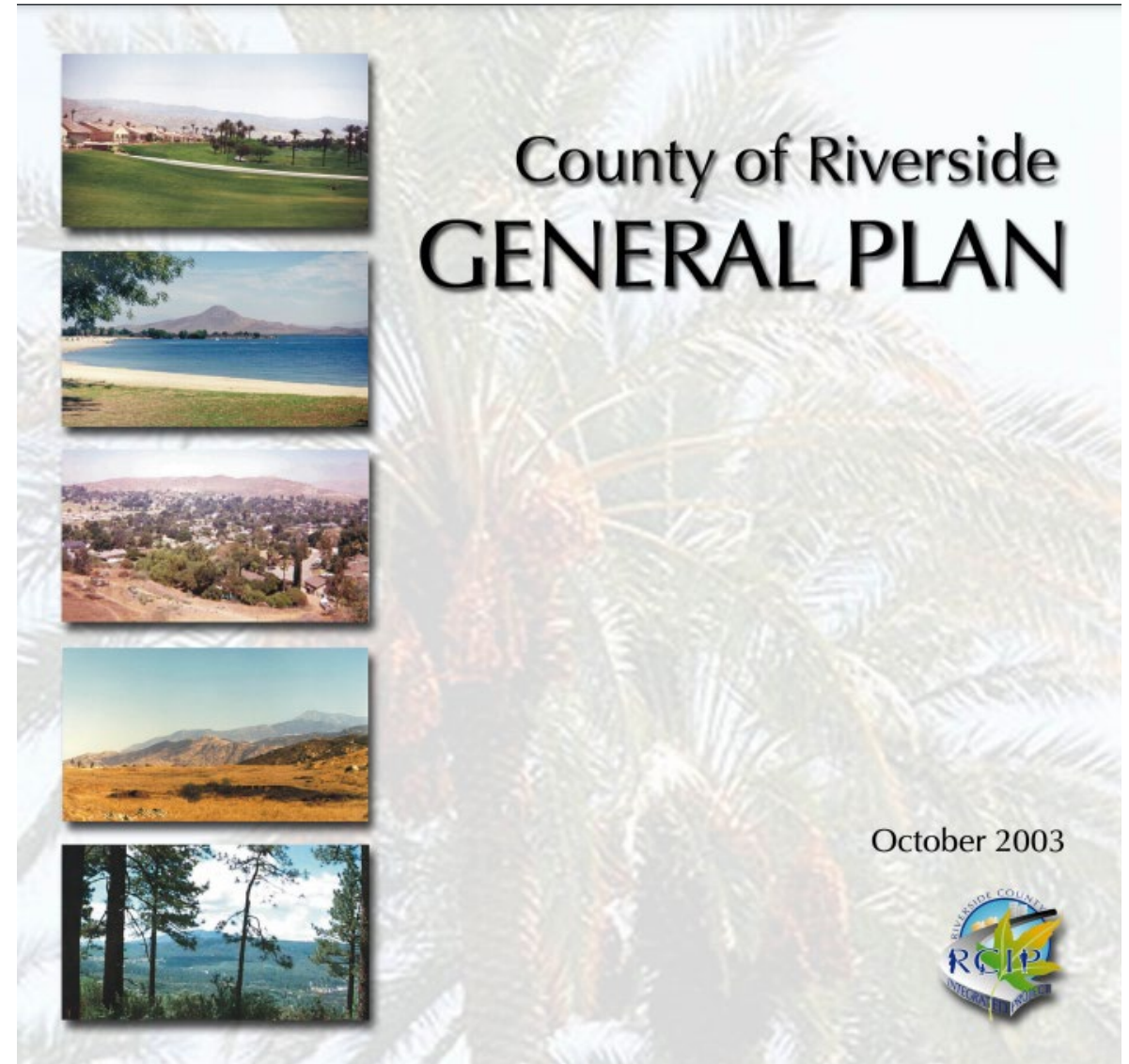
Noise abatement and land use compatibility with stationary and mobile sources:

- Highways and freeways
- Primary arterials and major local streets
- Railroad operations
- Aviation
- Local industrial plants
- Other ground stationary sources



Current General Plan

- **Adopted in 2003**
- **Pre-Incorporation Visioning**
- **Drafted from County General Plan**



Work Program Objectives for Wildomar

GENERAL PLAN

- Compliance with Recent Statutory Requirements
- Reflect Existing Conditions, Needs, and Future Projects
- Reflect Community Visions
- Roadmap of Actions for Implementation
- Adaptable and Flexible for Change

DEVELOPMENT CODE

- Update to Implement General Plan
- Efficient Administrative Procedures



CEQA REVIEW

ROBUST PROGRAM OF PUBLIC OUTREACH AND ENGAGEMENT

GPAG Roles

GPAG Responsibilities

- Provide input for consideration by decision makers
- Provide a forum for other members of the public
- Convey the community's perspective
- Identify critical issues and relevant information
- Identify and suggest resolutions
- Expand public awareness and participation
- Consider ideas and review materials

Meeting Topics and Dates

- Meeting #1: Visioning – June 16, 2022
- Meeting #2: Land Use – August 4, 2022
- Meeting #3: Land Use – September
- Meeting #4: Economic Development - October
- Meeting #5: Element Goals & Polices - November

Public Participation Activities & Process

Public Participation Program

How we will reach out to the public: Go where the people are:

- General Plan Advisory Group
- Community Workshops
- Pop-Up Events
- Stakeholder Interviews or Roundtables
- Online Surveys
- Social Media
- Project Branding and Collateral Materials
- Project Website



Public Participation Program



Previous Activities

- June 14 - Coffee with the City Pop-Up
 - ▶ General Plan Introduction
 - ▶ Strengths, Weaknesses, Opportunities, Threats

Coffee with the City

CONNECT WITH CITY LEADERS, GET UPDATES & ASK YOUR QUESTIONS

PRESENTED BY

MURRIETA/WILDOMAR
CHAMBER OF COMMERCE

EVERY 2ND TUESDAY OF THE MONTH
8:30AM | THE CORPORATE ROOM

34846 MONTE VISTA DR. WILDOMAR, CA 92595
QUESTIONS? LET US KNOW 951-677-7916 OR INFO@MWCOC.ORG

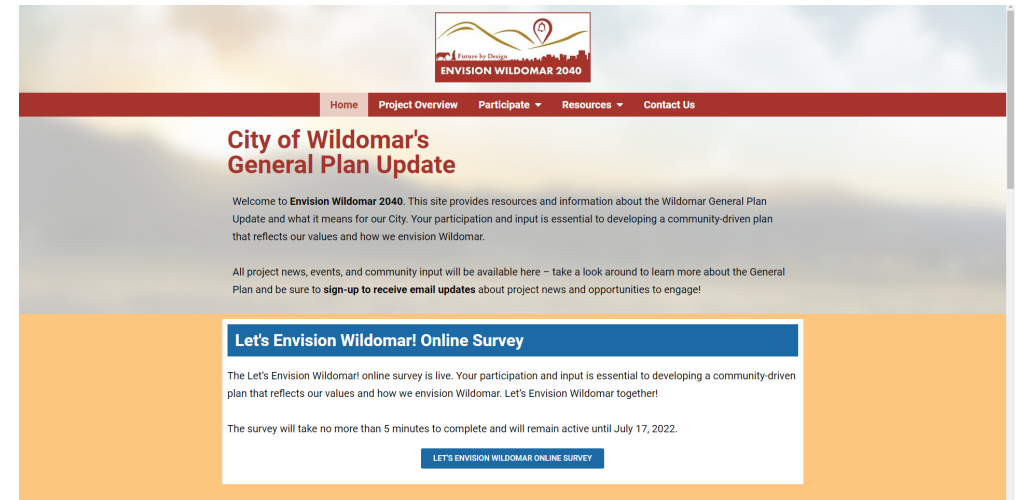
SPONSORED BY:
  

Public Participation Program



Current Activities

- Project Website
 - ▶ envisionwildomar2040.com
- Let's Envision Wildomar! Online Survey
- June 16: General Plan Advisory Group #1 Meeting
 - Where: City Council Chambers
 - When: 6:00PM – 8:00PM
 - General Plan Introduction
 - Visioning Exercise



Public Participation Program

Upcoming Activities

- Virtual Site Tour
- July 9: Pop-Up: Wildomar 14th Birthday
 - ▶ Where: Marna O' Brien Park
 - ▶ When: 6:00PM – 10:00PM
 - ▶ Visioning Exercise
- July 14: Citywide Workshop #1
 - ▶ City Hall
 - ▶ Details coming soon
- July 17
 - ▶ Visioning Survey Closes



Activity: *SWOT* Analysis

SWOT ANALYSIS

Document Wildomar's

- Strengths (e.g., small town charm)
- Weaknesses (e.g., lack of high paying jobs, fiscal challenges)
- Opportunities (e.g., potential development sites, build-off new health care industry)
- Threats (e.g., competition for retail and services from nearby cities)



Existing Conditions and Findings

Existing Conditions and Findings


Located in the Envision Wildomar 2040 website “RESOURCES” tab.



Wildomar Briefing Book

1. INTRODUCTION 2. ECONOMIC DEVELOPEMENT 3. COMMUNITY DESIGN & LAND USE 4. PUBLIC SERVICES 5. CONSERVATION 6. AIR QUALITY 7. HAZARDS & NATURAL RESOURCES

2. ECONOMIC DEVELOPEMENT



Income

The median household income in Riverside County and the City of Wildomar in 2020 were

GPAG Activity: Visioning

What is a Vision Statement?

- A succinct description of Wildomar's core values and aspirations, as they relate to the General Plan
- A shared image of the future we hope to create
- Future-oriented, purposeful, ambitious, and inspirational
- Identifies qualities and places that make the City unique



What is a Vision Statement?



Example Vision Statement

In 2030, the City of Mountain View embraces **sustainable** living and provides for the needs of all residents. It is a place that values its **diversity**, balances **preservation** with **innovation** and provides **quality education**. The community supports a **lively Downtown, vibrant neighborhoods** and a **healthy economy**.

The Vision and Guiding Principles



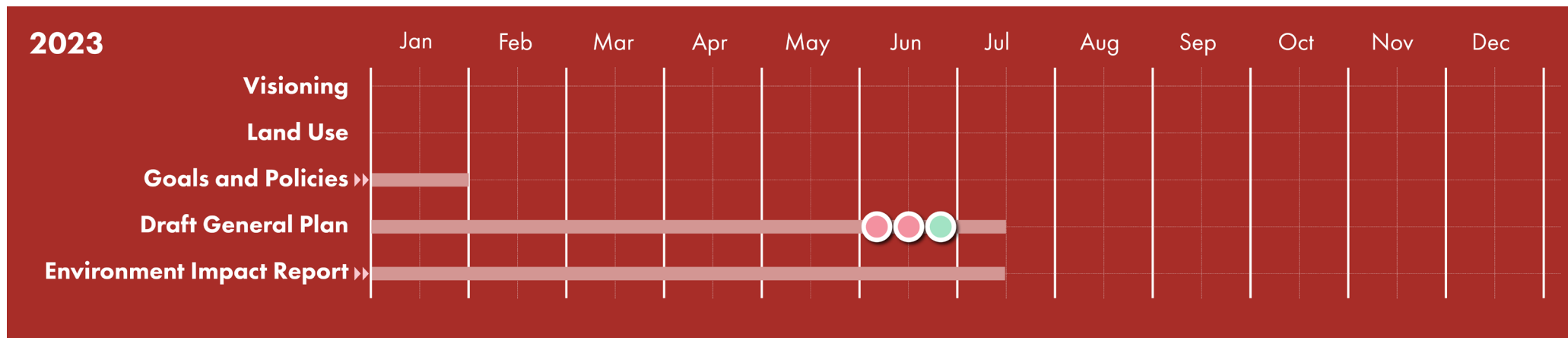
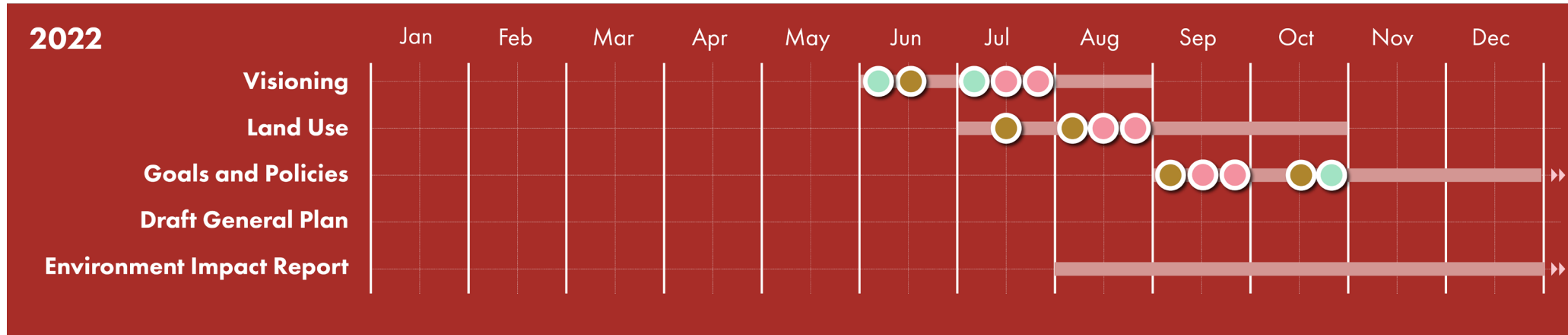
- The **Vision** is the underlying framework for all Plan content
- **Guiding Principles** provide direction for how the Vision will be applied in preparing the land use diagram and other physical plans and writing policies

GPAG Activity

Describe in one sentence your vision for Wildomar in the next 20 years.



Work Program Schedule



GPAG Meeting (5)
 Community Workshop (8)
 Community Pop-up (4)



Questions?

Go to the website and take the survey!

ENVISIONWILDOMAR2040.COM



Adjourn to August 4th Meeting

Meeting 2 | Land Use