



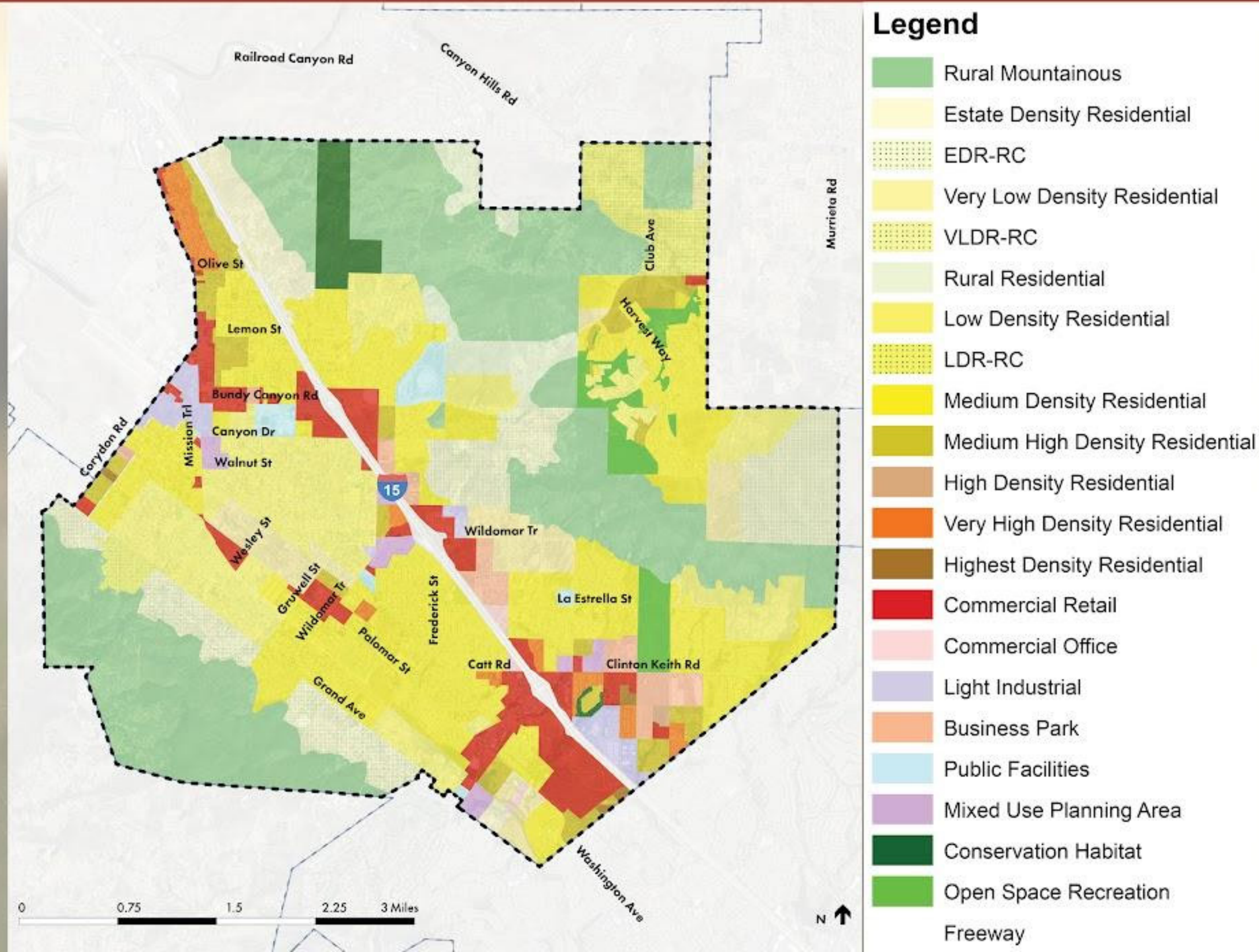
WELCOME TO THE CITY OF WILDOMAR'S

GENERAL PLAN UPDATE

COMMUNITY WORKSHOP #1

JULY 19, 2022 (VIRTUAL)

CURRENT GENERAL PLAN LAND USE



WHATS MISSING IN WILDOMAR?

Corydon still has some nice rural areas, so still need to keep green belts. Care about how housing is built. In the past 10 years lost view of milky way. Need to keep dark skies. Shield lights. How can city enforce it?

DOES WILDOMAR HAVE ENOUGH OF THE FOLLOWING TO MEET THE COMMUNITY'S NEEDS?

HOUSING TYPES AND QUANTITY

In the past, community opposition to project at Grand and Central. Windstone? Now people love it. 143 lots. DR Horton.

Wants to see clustering allowed in Rural Mountainous. Also wants an increase in density if cluster

Potential for transfer of density (TDR program)

Concern about housing that is being built. Will lose rural atmosphere. Brings traffic. Maybe too much density.

Important to balance the density requirements set by state with desire to keep the rural feel (keep properties that want to have small farms, etc.). No endless sea of track homes

Some additional apartments are ok but need to balance with rural. Get creative with mixed use. Or have apt. complexes in locations where accessible to shopping, etc.

Higher density along Corydon and along Mission Trail near library.

DINING AND ENTERTAINMENT

Only thing to do for activities is to leave city. Don't need to be dream extreme, and wineries to the south. Wildomar is a happy medium - good vibe that should be kept. Excited about indoor shooting range.

Some of the places don't have sufficient parking. Need ways for people to linger. Places that are fun. Ex. new coffee shop where you go to hang out.

Lack places to relax and linger.

EMPLOYMENT OPPORTUNITIES

currently tend to have mostly lower-paying types of jobs. Need some professional complexes for office workers. Like bio-tech/health care

Glad that Walmart pulled out. Wants smaller, more diverse businesses. Worried about too much influence on smaller businesses. Mom & Pop vs. large national retails.

mix of large vs smaller retailers.

Don't want the crowded places in Temecula. Discourage large box stores

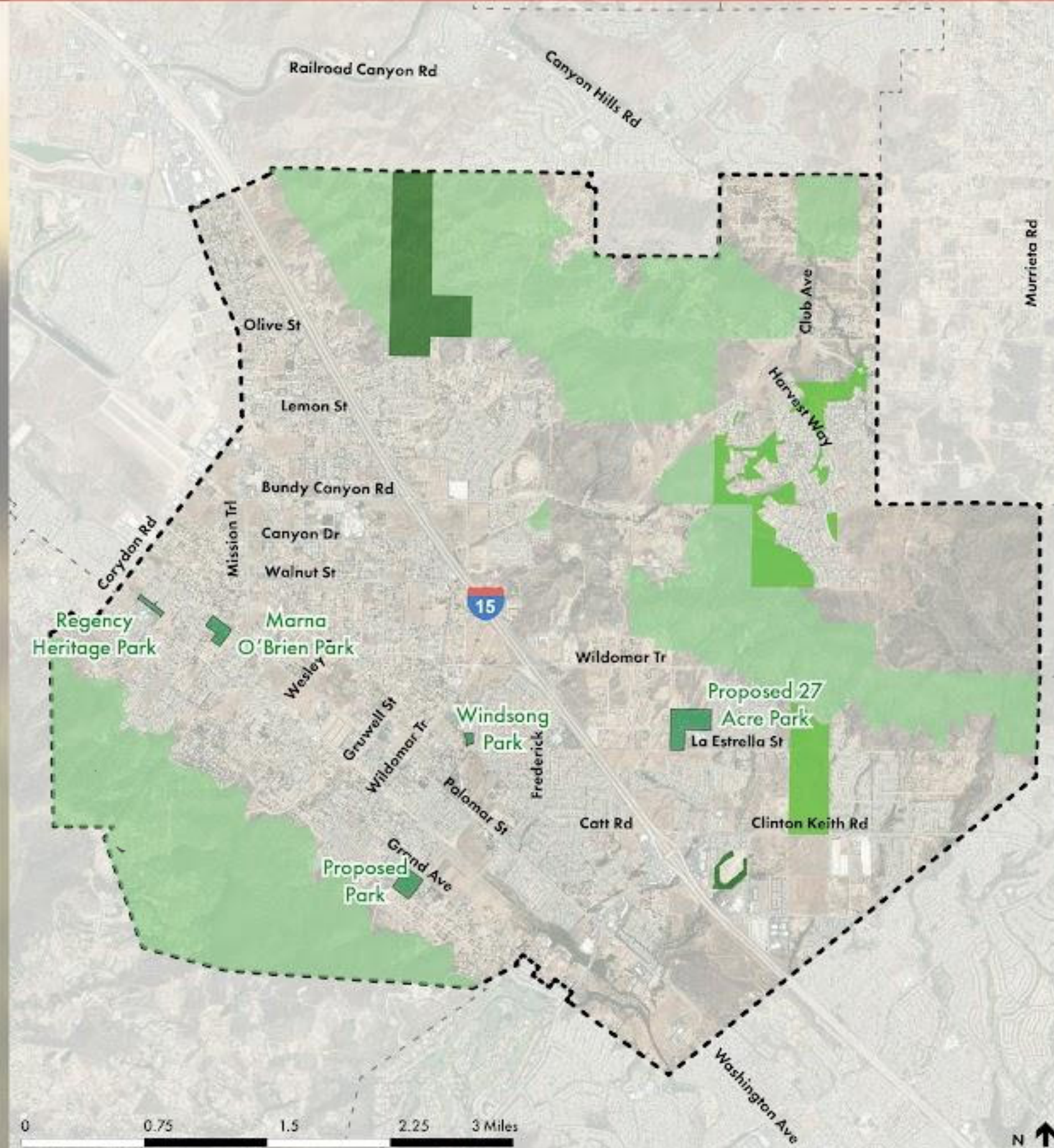
SHOPPING AND SERVICES

OTHER - SHARE YOUR THOUGHTS AND IDEAS!

When Riverside County did their update, it took 8 years. Frustrating to land owners. Challenge today is to stay on schedule.

currently have foot bridges for horses

PARKS AND OPEN SPACE



Legend

-  Parks
-  Open Space Recreation
-  Conservation Habitat
-  Rural Mountainous

OPEN SPACE

WHAT MAKES OPEN SPACE SPECIAL IN WILDOMAR?

PLACES FOR RECREATION IN NATURE

maintain green belts throughout developments with trails so they double as hiking trails and useable open space. Either paseos/hiking trails or natural green belts. Examples in Murrieta.

open space is more important than development. Must have designated open space to keep rural atmosphere.

PROTECTION OF PLANTS AND ANIMALS

consider an Oak Tree Preservation Ord

examples of where they tried to protect trees and then drainage has damaged them

see comments on Facebook re their views on preserving open space

example by McDonalds - try and preserve existing oak woodlands and riparian corridors, but killed them. Good way to balance development with keeping rural image.

BEAUTIFUL VIEWS

Already developed the best view - driving down Grand towards Clinton, where Beazer homes went in. Other favorite is on Grand/Clinton (south side), pretty tree line with sunflower fields.

Try and incorporate open space or a park in that area of the tree line view.

currently working with flood control to try and retain the ROW within the main body of Murrieta Creek. Hoover Ranch property

Hills on east and west - try and keep them open. Need to strengthen hillside development ordinance. (agree)

revisit Light Poll Ord. No mechanism of enforcement when people retrofit. Need education/outreach. Ord to be updated to reflect current types of lighting/shielding

Night sky is a beautiful view! Lower light polluting options for city streets.

OTHER - TELL US YOUR REASONS!

consider height of buildings and views that could be blocked.

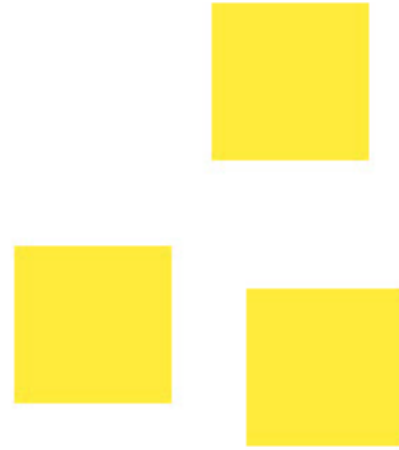
PARKS AND RECREATION

WHERE DO YOU CURRENTLY RECREATE IN WILDOMAR?

WILDOMAR PUBLIC PARKS

O'Brien park. Regency park next to Collier E has no parking or real amenities. Passive park intended for people to walk to.

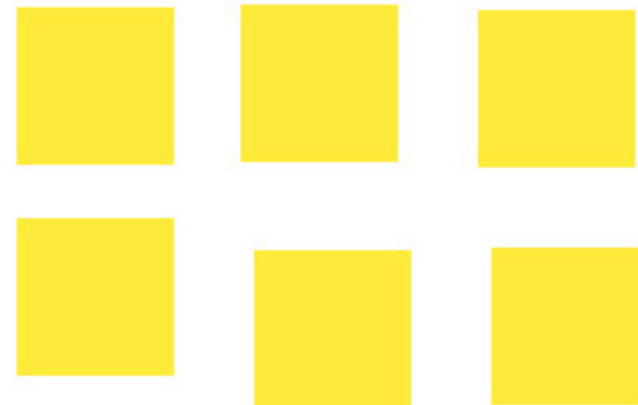
OPEN SPACE AREAS



PARKS OUTSIDE OF WILDOMAR

Santa Rosa Plateau/Cleveland National Forest - trail system. Place in Murrieta that has rock for climbing.

PRIVATE SPACES (SUCH AS GYMS OR AT HOME)



WHAT TYPES OF PARKS AND RECREATION DO YOU WANT TO SEE IN WILDOMAR?

SPORTS FIELDS

consider noise impact if doing outdoor venue

PLAYGROUNDS

need shade over playground equipment

OUTDOOR GATHERING SPACES

incorporate within commercial areas

OUTDOOR PERFORMANCE SPACES

currently the music is in parks (informal location)

nice to have a place for outdoor performances. Maybe have with a city center.

TRAILS

interconnect trails. One was closed behind Baxter/Grand - Justin Grant Trail.

Murieta Creek Trail is the only extensive trail. Opportunity to connect other types of trails to it. Need foot bridge there.

INDOOR COMMUNITY SPACES OR GYMS

Rock Fitness - great addition to the community. Like the unique option.

cater to the outdoor enthusiasts

OTHER - SHARE YOUR IDEAS!

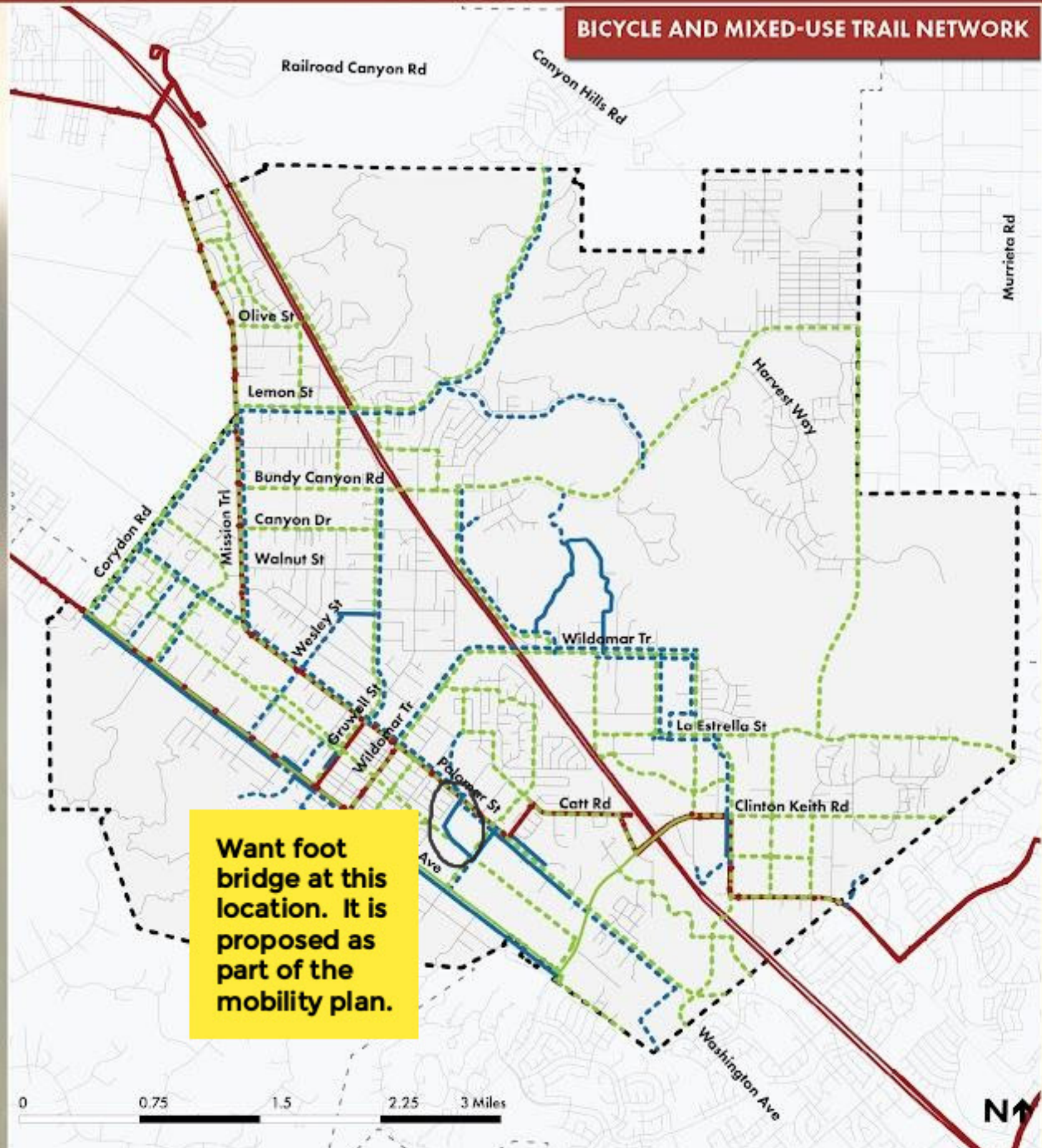
need to invest in trees for shade in all parks

come to relax after the extreme sports.

miniature bike trail at shopping centers

still need a place for off-road biking/RV vehicles

HOW DOES WILDOMAR MOVE?



BICYCLE AND MIXED-USE TRAIL NETWORK

Legend

- Existing Bicycle Route
- Proposed Bicycle Route
- Existing Mixed-Use Trail
- Proposed Mixed-Use Trail
- Bus Route
- Bus Stops

HOW DO YOU GET AROUND THE CITY? WHAT ARE CHALLENGES FOR WALKING, BIKING, TAKING TRANSIT, OR DRIVING IN THE CITY? LET US KNOW!

Want foot bridge at this location. It is proposed as part of the mobility plan.

connect S Pasadena to W side to allow pedestrians to walk to the middle school

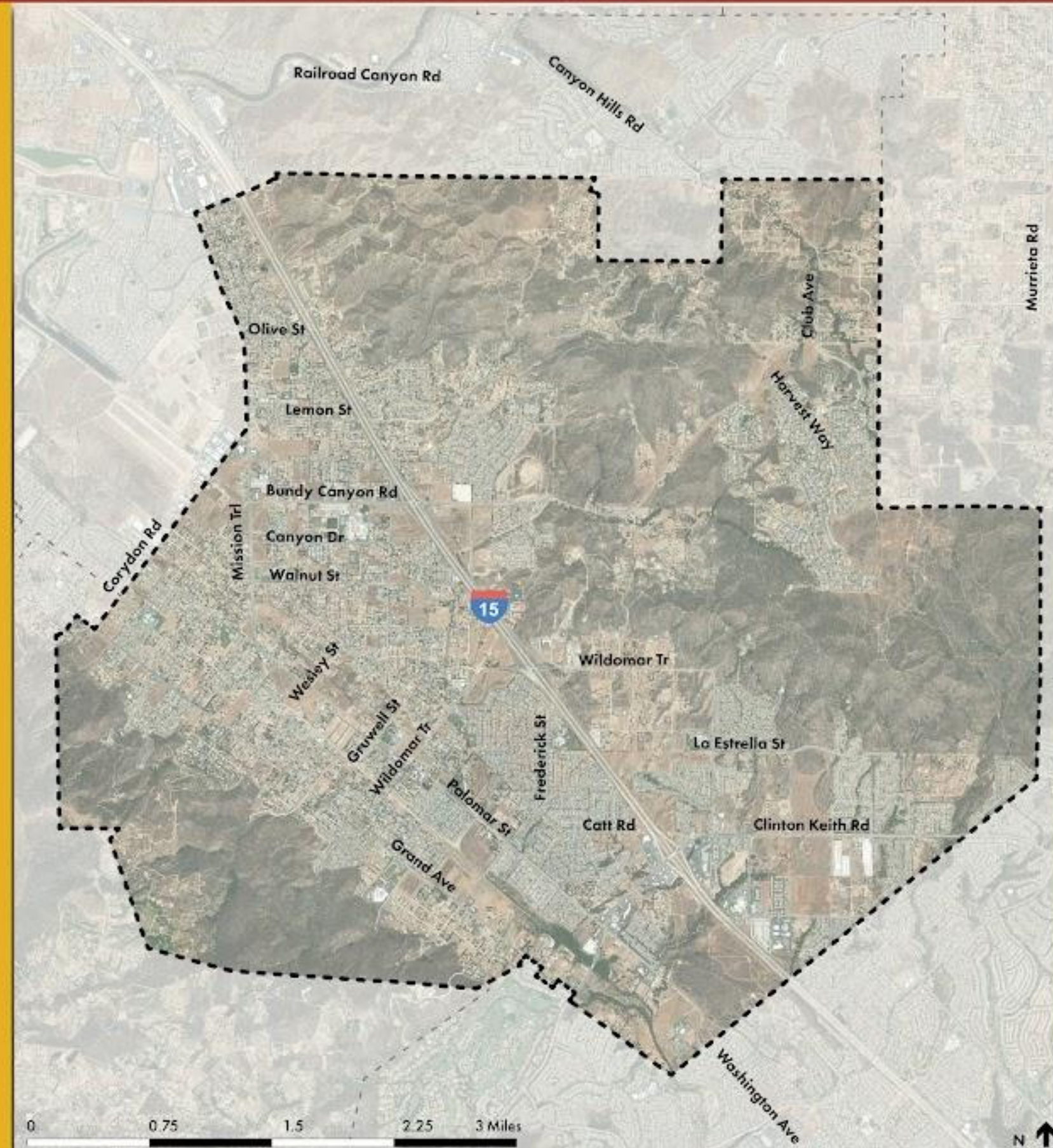
WHERE IS THE HEART OF WILDOMAR?

Clinton Keith seems to be the established heart. Logical place would be Wildomar Trail but the road needs to be kept traffic-free.

Want to push Clinton Keith area. Center on west side could be the focus of attention/expansion.

Keep oaks behind Wildomar Square

Likes the "old town" component, with opportunity to be more. This would continue the horse, rural character.



Have a well established "uptown" but need more inviting "downtown" in the historic downtown area along Wildomar Trail.

Central and Palomar has always been the center/heart of Wildomar. Needs work but has potential.

Don't want to overbuild on Wildomar Trail, but can refocus on Palomar instead. Palomar also connects to Clinton Keith corridor.

ENVISION WILDOMAR 2040

TELL US WHY YOU LOVE WILDOMAR!

**I love
Wildomar
because...**

Turn on your camera and tell us why you love Wildomar. Your video will be shared on the project website - with your permission.

**slower
paced
than
neighbors**

Love the peace and quiet. Rural feel. Once off the freeway, blood pressure drops (ZEN).

**The
sky is
darker!**

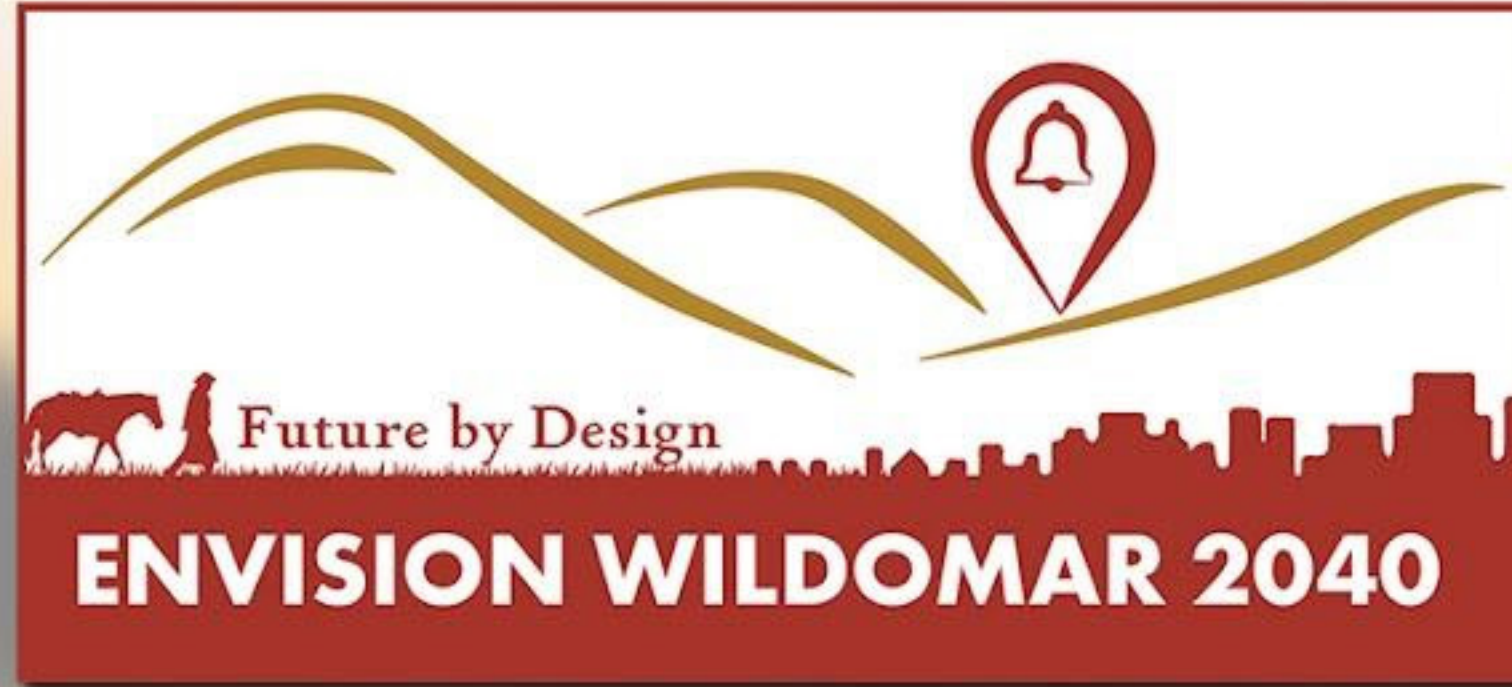
Have some of the best weather in the entire valley. Its the way the wind flows and pushes out the fog. (Elsinore convergence zone)

THANK YOU!



TAKE THE SURVEY!

How do you envision Wildomar in the next 20 years? We'd like your assistance in developing the General Plan vision statement, which helps establish future planning priorities and shared community values. Take the survey and let's envision Wildomar together!



HOW DO YOU

ENVISION WILDOMAR

IN THE NEXT 20 YEARS?



Future by Design

ENVISION WILDOMAR 2040

THANK YOU!