



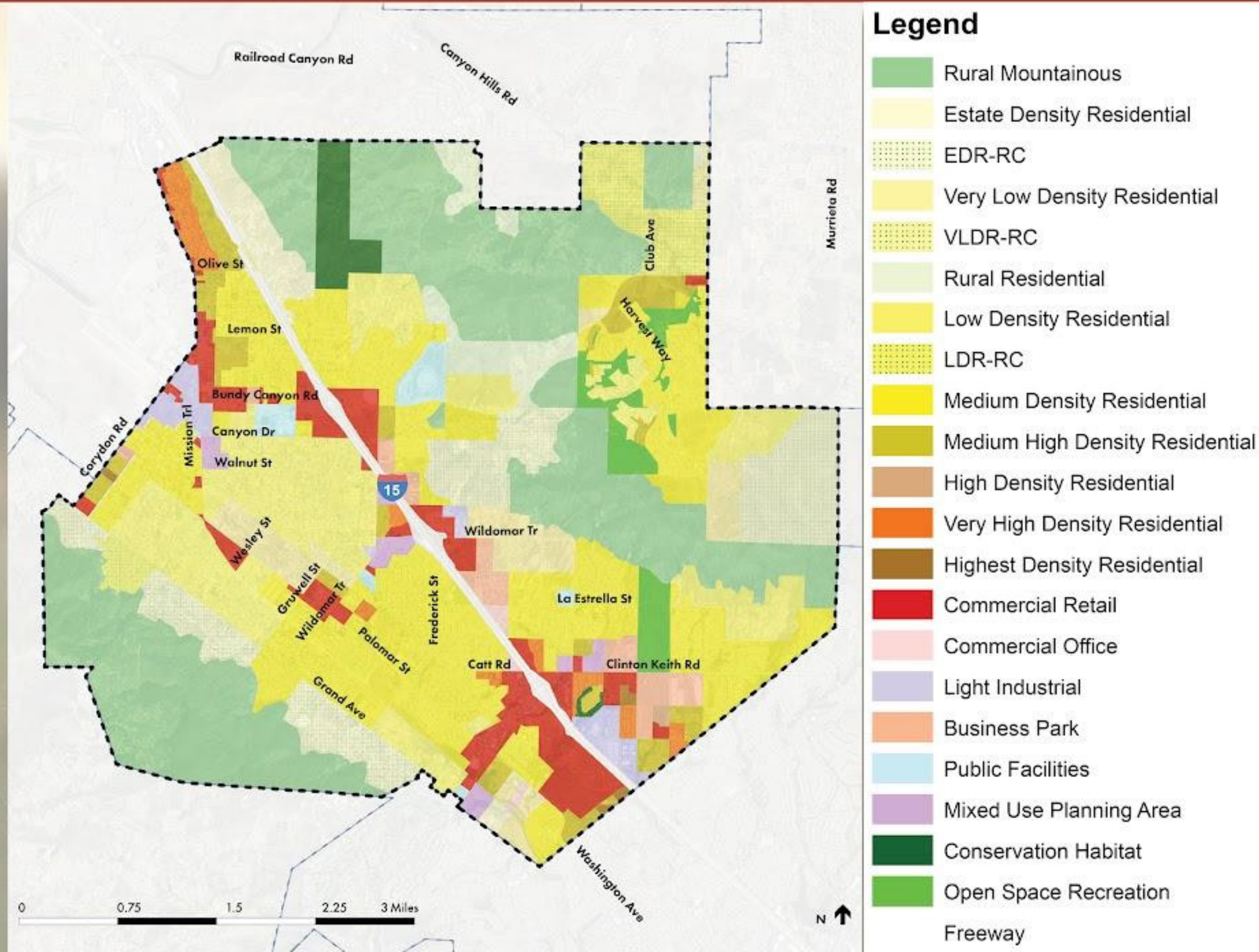
WELCOME TO THE CITY OF WILDOMAR'S

GENERAL PLAN UPDATE

COMMUNITY WORKSHOP #1

JULY 19, 2022 (VIRTUAL)

CURRENT GENERAL PLAN LAND USE



WHATS MISSING IN WILDOMAR?

DOES WILDOMAR HAVE ENOUGH OF THE FOLLOWING TO MEET THE COMMUNITY'S NEEDS?

HOUSING TYPES AND QUANTITY

Concern with rezoning and subdivision of larger lots allowing higher density. Don't want highrise apartments like approved in Murrieta.

DINING AND ENTERTAINMENT

Things to do for adults and children: wine tasting, community center, after-school programs.

Food and shops like Old Town Murietta (in keeping with western style)

Support City's old town vision, mobility plan

EMPLOYMENT OPPORTUNITIES

SHOPPING AND SERVICES

Revenue from commercial and retail uses to support services that the residents want (parks, etc.) and infrastructure (road conditions).

Place to buy a 2x4. Televisions. Rather than apartments and medical in close proximity to 15 freeway

OTHER - SHARE YOUR THOUGHTS AND IDEAS!

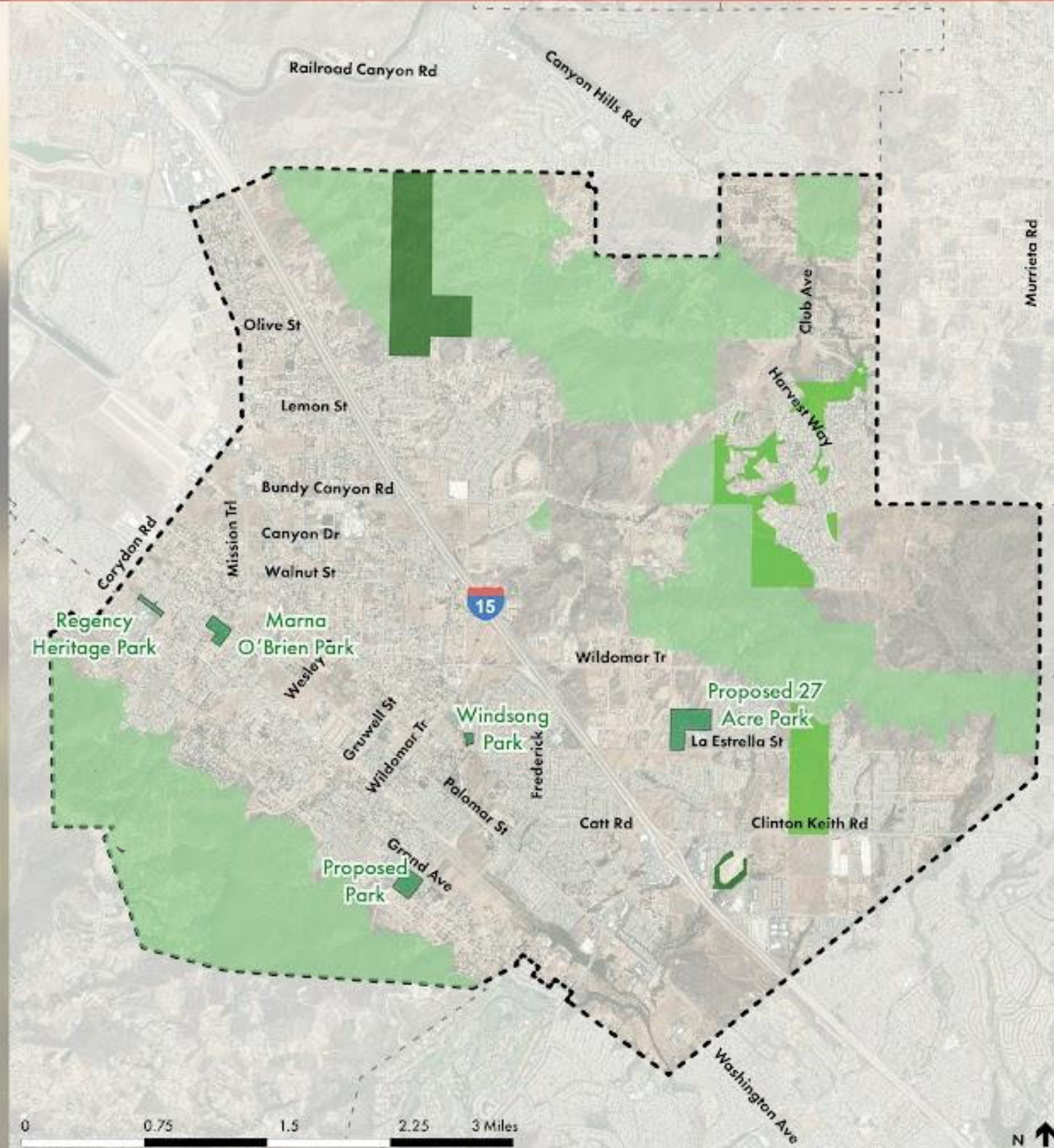
Too dangerous to ride horses throughout the city. Traffic getting worse, roads no being repaired. Concerned about preserving what Wildomar was.

80 acre site identified for recreation and ultimately for use by college campus. Still owned by County - maintain and build as regional park

Don't want to see Wildomar turn into the next Temecula.

Plan for adequate infrastructure to support city

PARKS AND OPEN SPACE



Legend

-  Parks
-  Open Space Recreation
-  Conservation Habitat
-  Rural Mountainous

OPEN SPACE

WHAT MAKES OPEN SPACE SPECIAL IN WILDOMAR?

PLACES FOR RECREATION IN NATURE

Utilize for horse riding. Too much high speed traffic adjacent to existing trails. Have to leave city for that use.

Interconnecting trails for mixed use (connected across freeway) being developed by City Manager.

Connect to regional park on east side of freeway and parks on west side of town

Agree on importance of open space. Trails off Grand for horse use, would like to see more of that type. Plug for trail beautification.

PROTECTION OF PLANTS AND ANIMALS

Areas for wildlife and peace and quiet. Want areas amenable for dog use and wildlife (green space)

BEAUTIFUL VIEWS

OTHER - TELL US YOUR REASONS!

Value open land

PARKS AND RECREATION

WHERE DO YOU CURRENTLY RECREATE IN WILDOMAR?

There
isn't
any!

WILDOMAR PUBLIC PARKS

OPEN SPACE AREAS

PARKS OUTSIDE OF WILDOMAR

PRIVATE SPACES (SUCH AS GYMS OR AT HOME)

WHAT TYPES OF PARKS AND RECREATION DO YOU WANT TO SEE IN WILDOMAR?

SPORTS FIELDS

Need more
ball fields
(soccer fields)

PLAYGROUNDS

OUTDOOR GATHERING SPACE

Horse arena,
FFA, Rodeo
events

OUTDOOR PERFORMANC SPACES

Event
site

Concert
venue

Outdoor
performance
spaces: band
shell, drama,
music

TRAILS

INDOOR COMMUNITY SPACES OR GYMS

Community Center:
place to congregate
indoors, cool down
area, connect to
library and have
programming for
kids and adults

After school
and summer
school
programs

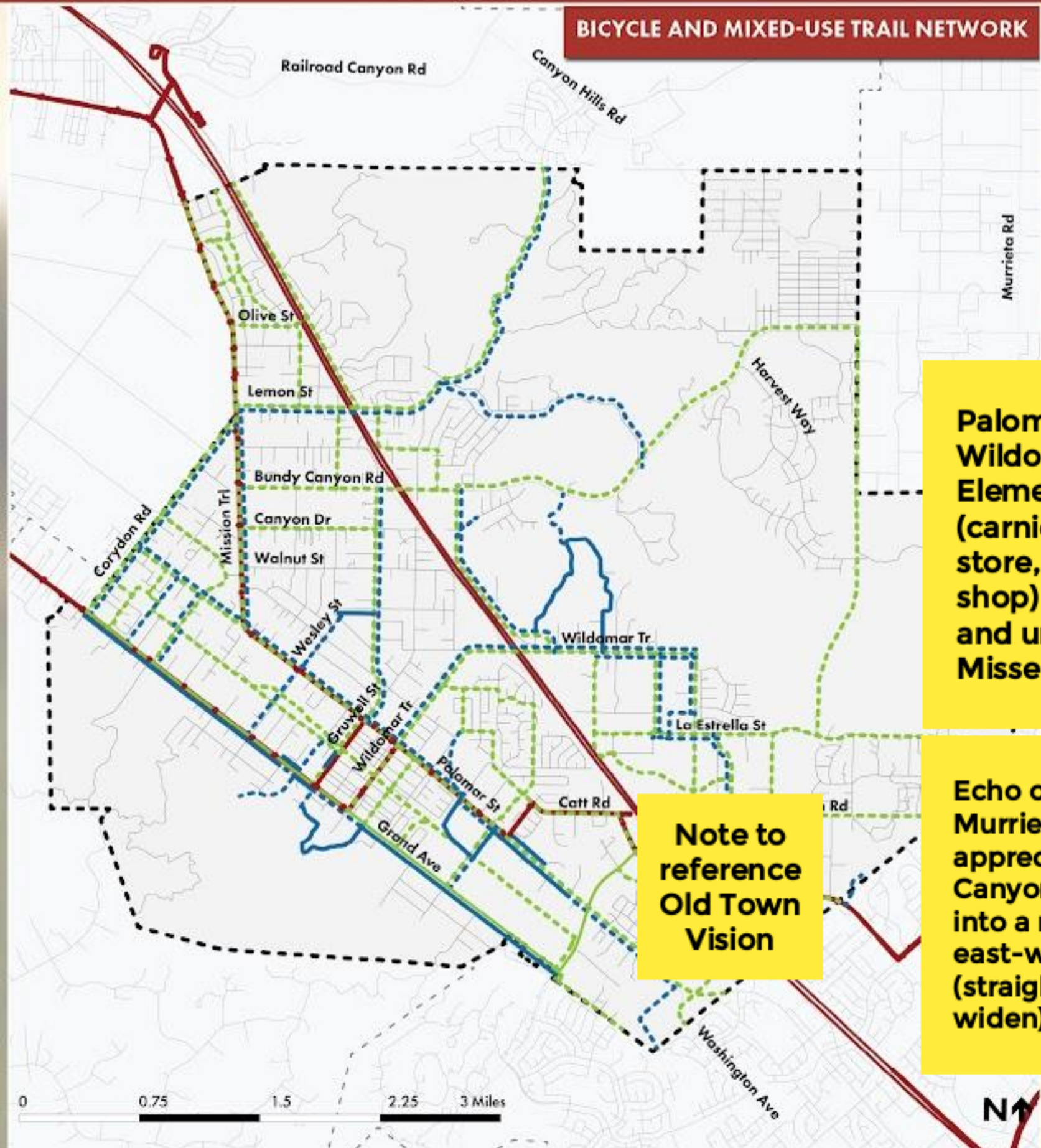
OTHER - SHARE YOUR IDEAS!

Event spaces:
indoor or
outdoor arena

skate parks,
bicycle
(pump) tracks

Civic
Center/Community
Building

HOW DOES WILDOMAR MOVE?



Legend

- Existing Bicycle Route
- - - Proposed Bicycle Route
- Existing Mixed-Use Trail
- - - Proposed Mixed-Use Trail
- Bus Route

HOW DO YOU GET AROUND THE CITY? WHAT ARE CHALLENGES FOR WALKING, BIKING, TAKING TRANSIT, OR DRIVING IN THE CITY? LET US KNOW!

Palomar corner near Wildomar Elementary (carniceria, liquor store, ice cream shop) is run down and unappealing. Missed opportunity.

Palomar to Riverside Dr is dangerous, focus on implementing mobility plan recommendations for that area

Bike Riding - current trails are identified in plan but not built. Dangerous down Palomar towards Washington. Want better connections to neighboring cities and trails. Tie into trail on La Estrella, push to County property

Note to reference Old Town Vision

Echo old town Murrieta appreciation. Bundy Canyon is turning into a major east-west artery (straighten out, widen).

Coffee Shop at wildomar trail and palomar, parking is difficult. Would like to be able to utilize that and neighboring businesses.

Appreciate driving through old town Murrieta, would like to see something like that in Wildomar (palomar and wildomar trail)

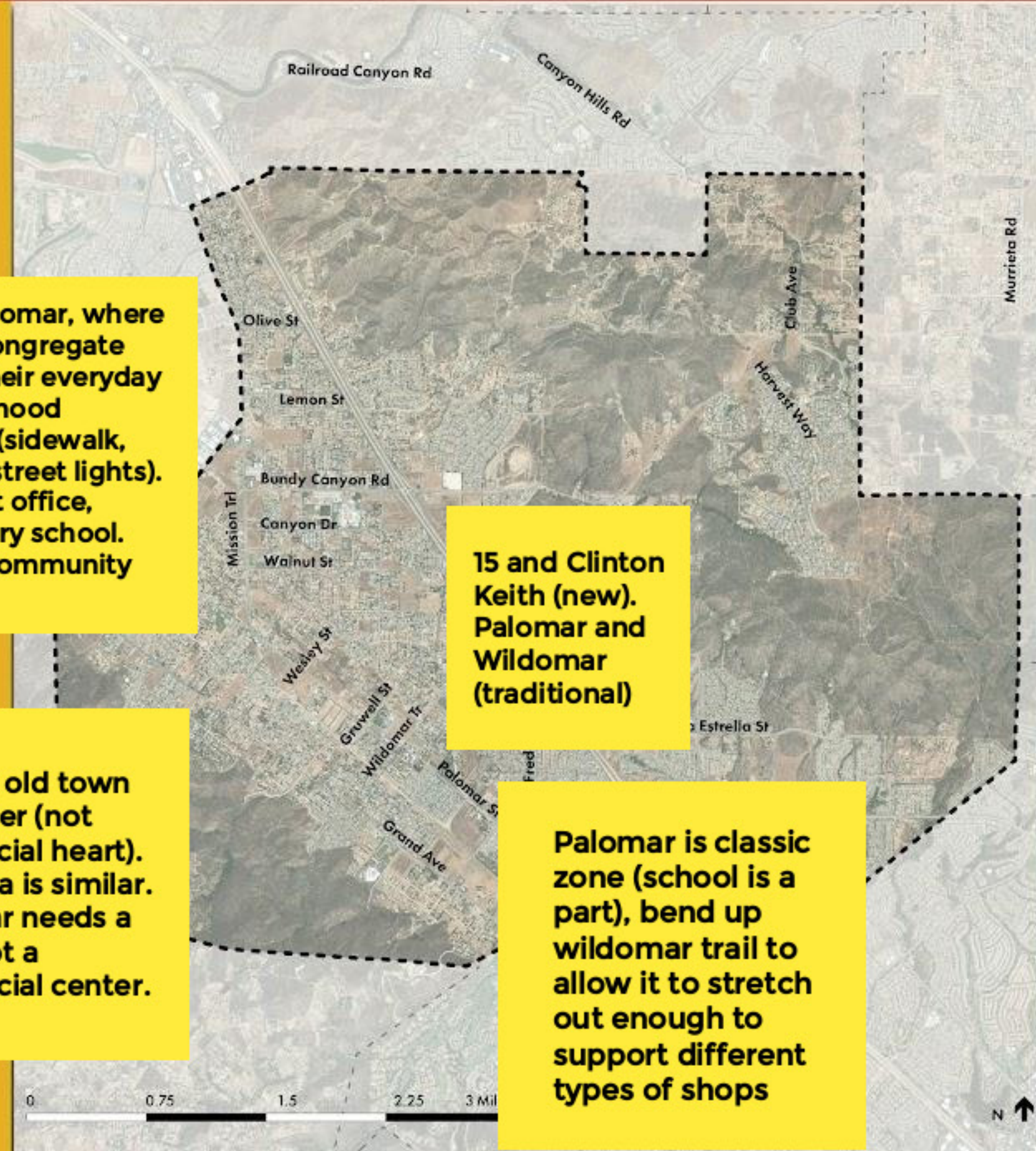
WHERE IS THE HEART OF WILDOMAR?

Along Palomar, where people congregate and do their everyday neighborhood business (sidewalk, lighting/street lights). Near post office, elementary school. Smaller community feel.

15 and Clinton Keith (new). Palomar and Wildomar (traditional)

Murrieta old town city center (not commercial heart). Temecula is similar. Wildomar needs a heart, not a commercial center.

Palomar is classic zone (school is a part), bend up wildomar trail to allow it to stretch out enough to support different types of shops



ENVISION WILDOMAR 2040

TELL US WHY YOU LOVE WILDOMAR!

**I love
Wildomar
because...**

Turn on your camera and tell us why you love Wildomar. Your video will be shared on the project website - with your permission.

Jolene: feel safe in Wildomar, have wonderful neighbors, not too overcrowded, respite from densely populated cities

Eric: was drawn to housing affordability, small town feel, traffic is low, community feel, beautification, cul-de-sac neighborhoods, so much waving!

John: Rural flavor, suburban neighborhoods (close and open), community in general comes together for events.

Bridgette: Community jumps in and cares for each other

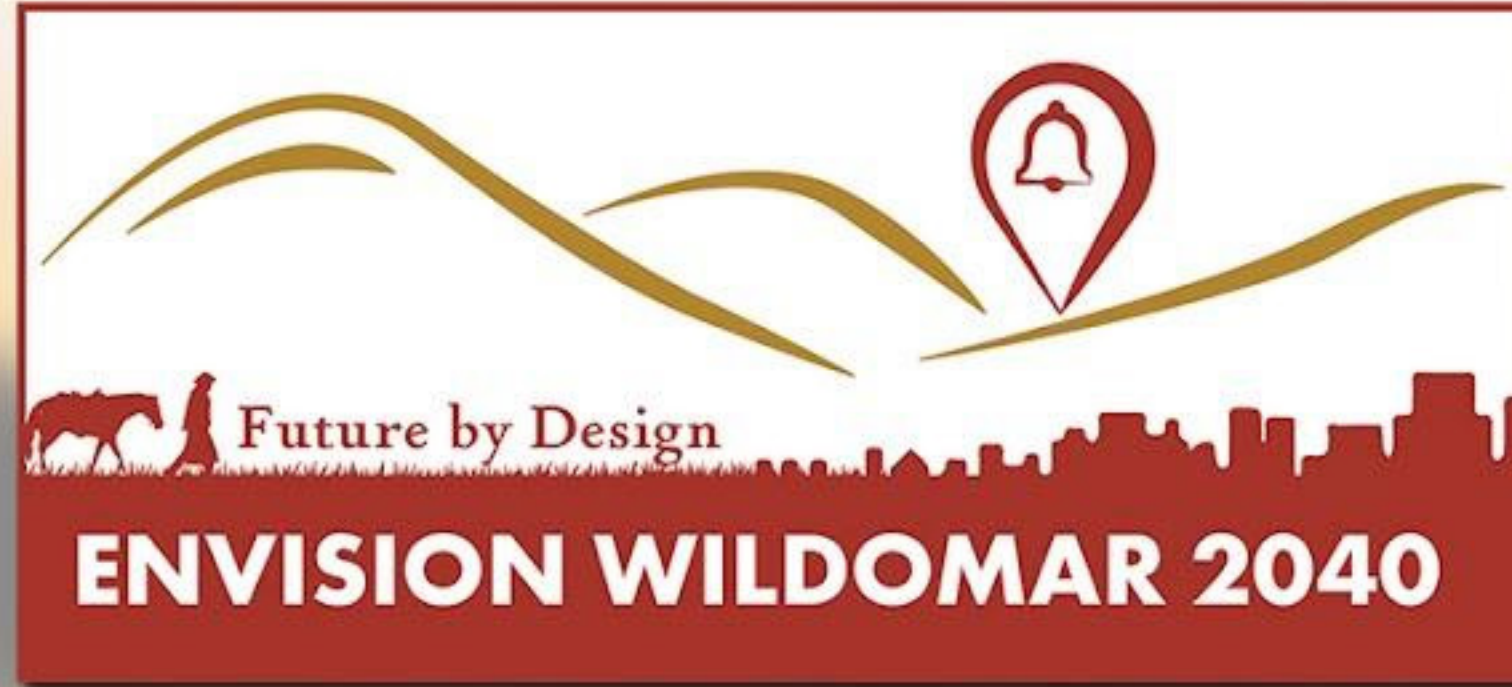
**Monty:
What
John
Lloyd said**

THANK YOU!



TAKE THE SURVEY!

How do you envision Wildomar in the next 20 years? We'd like your assistance in developing the General Plan vision statement, which helps establish future planning priorities and shared community values. Take the survey and let's envision Wildomar together!



HOW DO YOU

ENVISION WILDOMAR

IN THE NEXT 20 YEARS?



Future by Design

ENVISION WILDOMAR 2040

THANK YOU!